

Unlock the secrets of *your* mind

Tour the landscape and networks in your brain

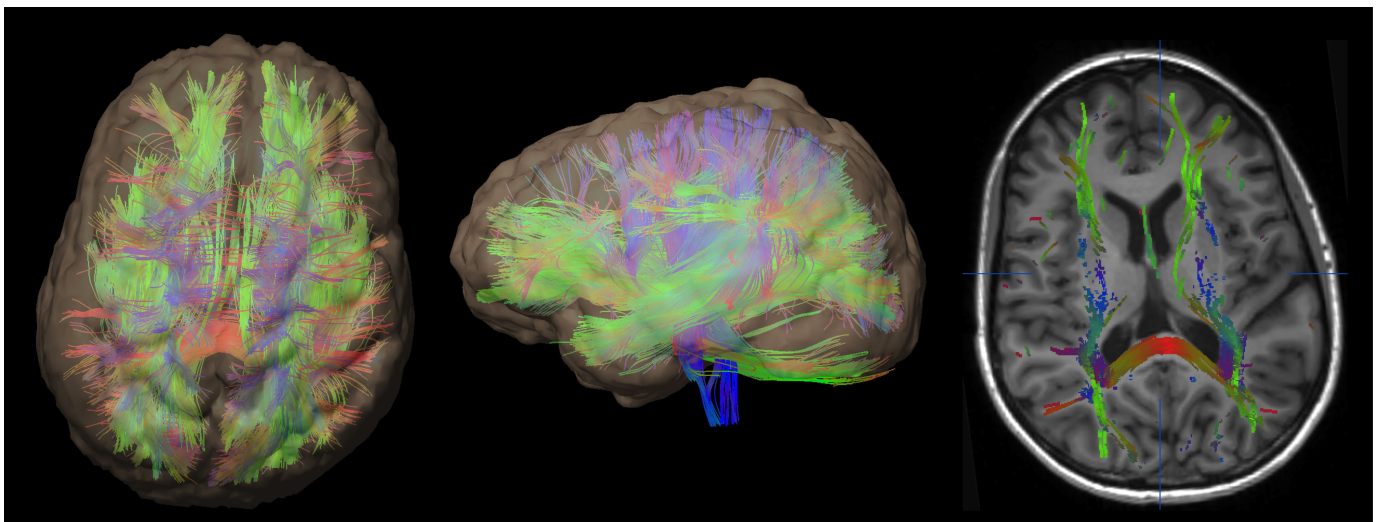
Over two thousand years ago, early Polynesian navigators set out from Southeast Asia to explore the Pacific Ocean. By the 2030s, NASA aims to send the first humans to Mars.

Exploration is a defining aspect of human nature. Likewise, our own lives are stories of exploration and adventure. We are guided not just by circumstance, but by our minds—which are unique.

NEURODOME is a planetarium show that explores the brain. As part of our fundraising campaign, we are offering two top donors a unique opportunity: capture a complete 3D mapping of your own brain and brain activity and our final animations will then tour through your data. If you desire, we will feature visuals of how your brain processes sensory information—your actual brain activity. This reward is made possible through collaboration with Weill Cornell Medical College's Neuroradiology department and Cornell's Imaging Data Evaluation & Analysis Laboratory (IDEAL).

It's not just a routine head scan.

The imaging, performed by physicians and scientists at the Citigroup Biomedical Imaging Center at Weill Cornell Medical College, employs cutting edge, high-resolution MRI instrumentation together with custom visualization software and data processing technology. These tools make it possible to render structures in your brain and to follow the flow of information.



Shown above: Diffusion tensor imaging (DTI), one of the techniques that will be used in this backer reward, reveals the elegant architecture of the brain's nerve fibers, along which information is transmitted through the brain.

A few medical details

Scans will be arranged by Weill Cornell Medical College / NewYork-Presbyterian Hospital's Neuroradiology department in New York City. **All scans will be reviewed by an attending radiologist.** You will additionally be provided with a CD of your data and a DVD of the animations touring through the imagery. This procedure requires a medical waiver form and subjects must be scan-safe (no pacemakers, cochlear implants, etc.). Please contact us with additional questions.

How to get this

This experience is offered as a backer reward through an online crowd-fundraising campaign hosted by Kickstarter, a threshold pledge system for funding creative projects. Funding on Kickstarter is all-or-nothing; if our project falls short of our \$25,000 fundraising goal, backers are charged nothing. This reward is available in return for a pledge of \$5,500, and is limited to just two donors. Pledges can be made through Kickstarter at <http://kck.st/ZQlZsk>

About us

NEURODOME is a not-for-profit project, fiscally sponsored by Pentacle, Inc. a NYC-based 501(c)(3) organization supporting the arts. Donations are therefore considered charitable contributions, and Pentacle will issue receipts for tax deduction purposes.

For more information, contact:

Jeanne A. Garbarino, Ph.D.
Director of Science Outreach
The Rockefeller University
jgarbarino@rockefeller.edu
212-327-7418